

The Embassy of the Kingdom of
the Netherlands in the United Arab Emirates
presents

Art and Design

Highlights
from
Holland

Welkom!

Welcome ('welkom' in Dutch) to the Embassy of the Kingdom of the Netherlands in Abu Dhabi. Through this beautifully illustrated book we would like you to take a grand tour of the premises and enjoy the carefully selected art and design collection. Everything you will see is created by Dutch companies and artists such as Marcel Wanders, Erwin Olaf and Esther Stasse. This unique book was created by Dutch photographers Erik and Petra Hesmerg Photography and design studio Beukers Scholma based in Holland.

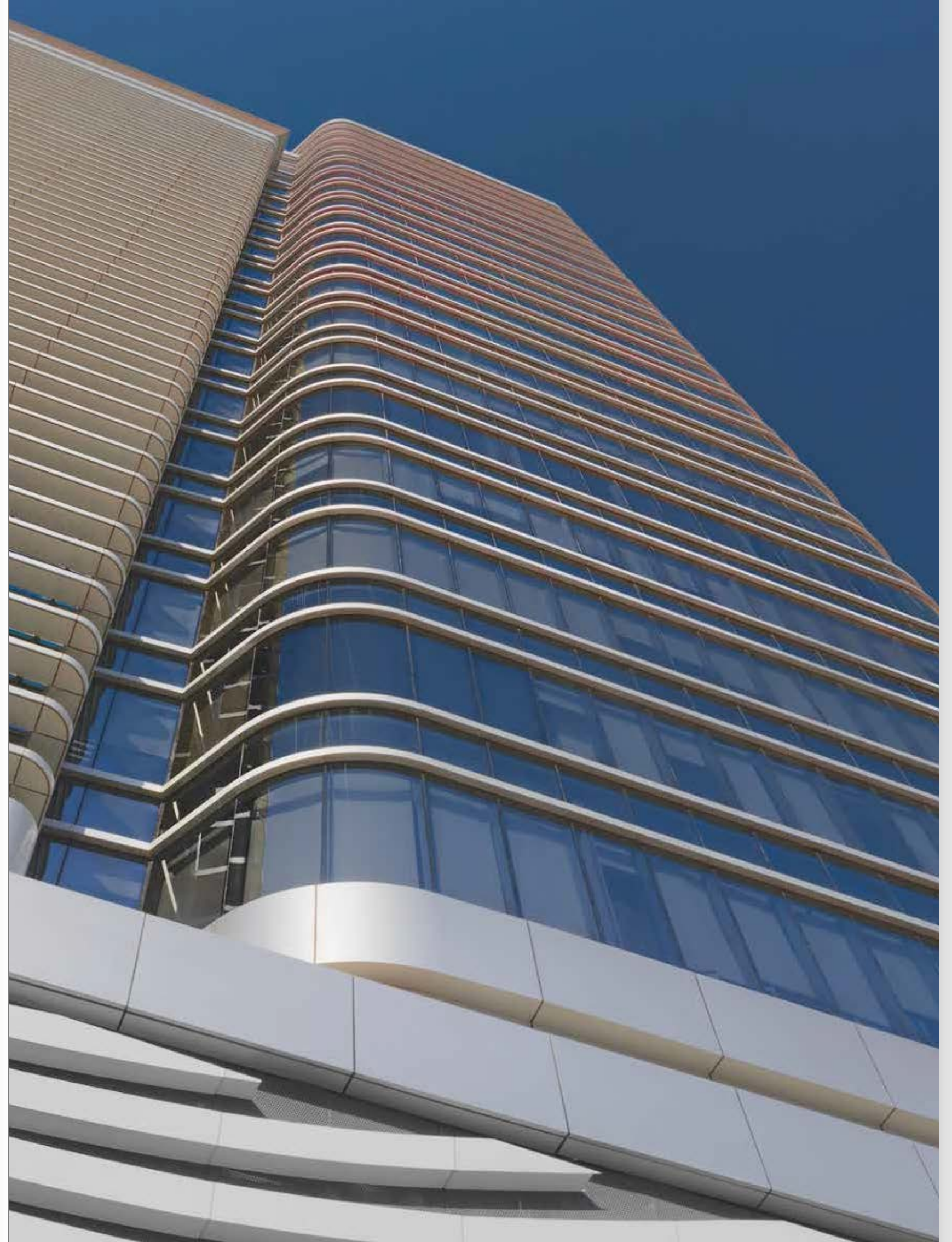
Stepping out onto the 14th floor of the Centro Capital Centre Building, you are greeted by natural light and an almost 360 degree view of Abu Dhabi. On one end of the building stands the golden orange LIWA tower, created by the Dutch architect Kas Oosterhuis.

Invisible from the embassy, scattered around the UAE, are several other Dutch creations and involvement by Dutch companies: such as the Hazza Bin Zayed Stadium in Al Ain with its iconic facade resembling the trunk of a palm tree by BAM constructors, as well as the iconic Palm Jumeirah Island and TBC Bluewaters Island, which are the result of applying sand as well as re-profiling various beach areas, a job well done by Van Oord. The Dutch Mammoet heavy lifting services supplied the second tallest crane in the world to lift Dubai Eye's observation wheel. ICE International has been, among many other projects, responsible for the carpets in the lobby of the St Regis Hotel in Abu Dhabi and Fugro provided engineering geotechnical services for the Burj Khalifa. The Dubai based Gielissen from Holland built two rides for the Ferrari Worlds theme park in Yas Island and Hypsos, Kossmann.dejong and the OPERA Amsterdam are active as exhibition designers.

You might be surprised by the vast open space with no walls at the embassy. The interior design is a showcase for the Dutch 'Nieuwe Werken', a new world of work that encourages flexible working times and unassigned workstations. This enjoys great interest in both business and in the government. The innovative time and location-independent work method proves to be more social and efficient and in keeping with the Dutch commitment to operate with openness and transparency. The Dutch company Ahrend produces this simple, bright, functional office furniture.

Another Dutch work philosophy is to create an agreeable, cultural working and living atmosphere through art and design. Themes that are prevalent in most of the younger art work at the embassy are connected to Holland; its identity, prosperity and society. It combines works that demonstrate how Holland is perceived by other cultures and how the Dutch contribute to preserving and strengthening their natural environment.

Holland enjoys over 40 years of diplomatic relations with the UAE and over the years more than 200 Dutch companies have established themselves in the UAE. The Embassy of the Kingdom of the Netherlands is very proud of this long and vast Dutch presence. In the first insert of this book you will find some beautiful pictures of icons in the UAE to which the Dutch contributed.



Crossing disciplines 1

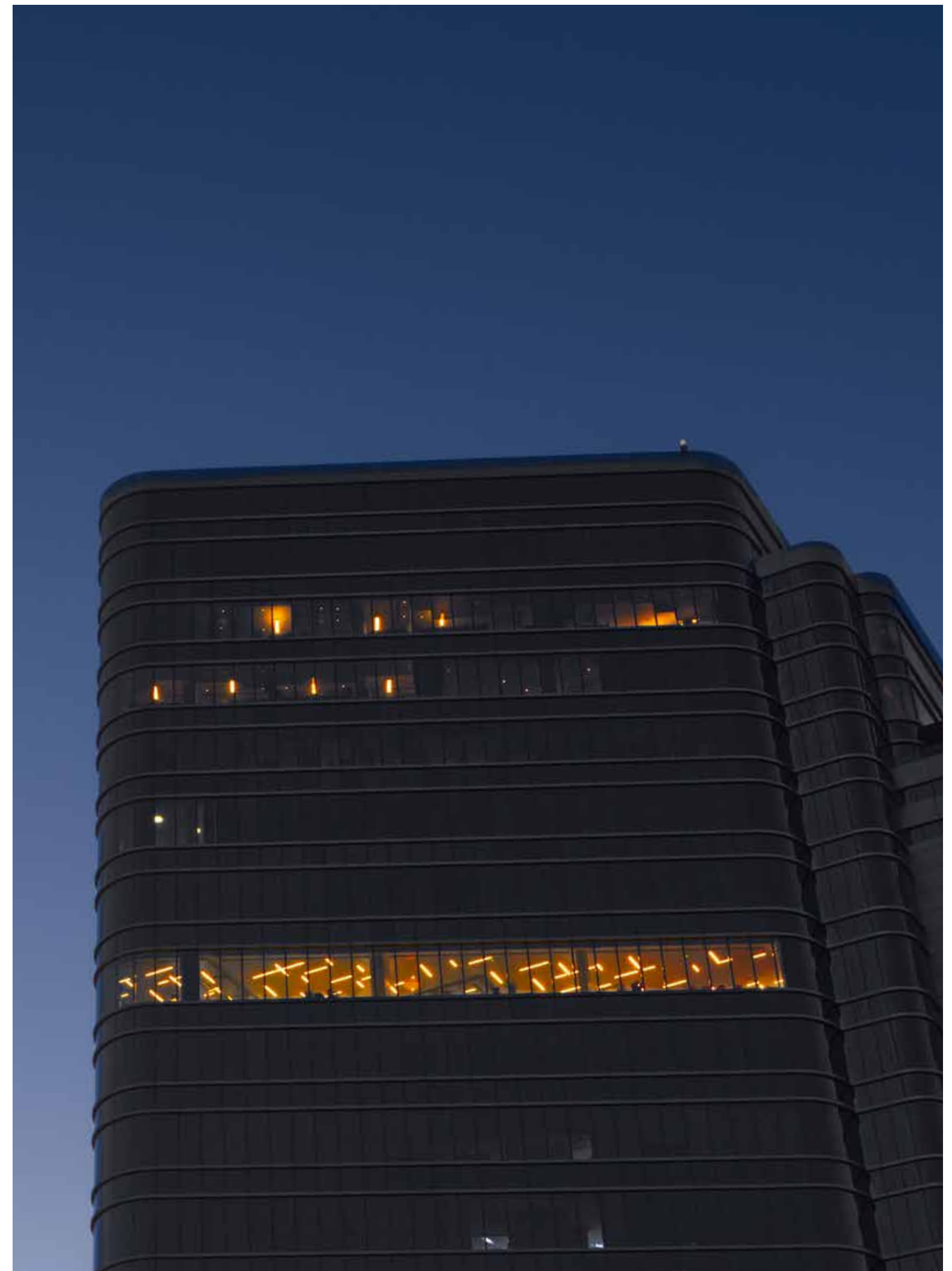
A painter who enjoys experimenting with sculptures. Designers who not only create useful objects but are innovators developing new technology or flirting with the use of conceptual ideas. Photography as an art, which surpasses the act of pure registration and refers to the tradition of the painted, symbolic still life of Holland's 'Golden' 17th century.

This constant intersection between disciplines typifies art and design from Holland. Internationally acclaimed art schools such as the Design Academy, Rietveld Academie and Rijksakademie encourage this intersection and are open to both Dutch and foreign students.

- 01 As a designer, **Jólan van der Wiel** experiments with technology and natural forces. His inimitable stools and candlesticks literally take shape as the tangible result of reacting gravity, centrifugal force, static force and Aeolian (wind-blown) energy. For this method Van der Wiel developed a machine in which resin and iron particles are put into a magnetic field, resulting in these characteristic, solidified stalactite-like shapes.
- 02 **Jean-Marc Spaans** creates photographs of light. He captures the trace of moving light by photography without showing its source. These traces of light appear as if they are part of architecture or objects actually constructed or installed in space. Some of them look like still, geometric structures while others resemble dynamic, organic life. Here we see his 'paintings with light' in the Rijksmuseum Amsterdam, the foremost national museum of Holland.
- 03 The small sculptures of **Ingrid van der Hoeven** show female appearances between realistic figuration and abstract. Still, the shapes also refer to urns, used in China. Van der Hoeven used layers of mdf-plywood instead of clay, carefully glued together. Saw cuts suggest the cut of clothing.
- 04 All-round designer **Edward van Vliet** finds inspiration in exotic influences: 'I like the blend between east and west,' he says. His geosphere Rontonton lamps are made out of plastic and aluminium perforated sandwich sheets. The fairy tale like radiation through the perforated sheets adds an additional layer. Other products of Van Vliet are his custom-designed carpets, which are being produced by **ICE International**, a company in Holland. ICE specialises in high-end residential and hospitality projects and is also responsible for the carpets in the lobby of the St Regis Hotel in Abu Dhabi, Jumeirah Beach Hotel, Jumeirah Emirates Towers, and the Burj Al Arab in Dubai.
- 05 **Henk Ovink**, represented here by a 'pebble-sculpture' and the hat-like object 'Pearls', started as a monument artist, making sculptures for public spaces. However, he later made a radical career change. Ovink now is the first special envoy for International Water Affairs for the Netherlands – 'With its integrated approach

to water shortages, water safety, water quality, logistics and transport, the Netherlands make the difference across the globe. We are leaders in the field, which obliges us to continue to invest and innovate with our know-how and expertise.'

- 06 **Willem Hussem** found the motives for his colourful, abstract geometric paintings in the green polder landscapes of Holland. After 1967, Hussem 'translated' his paintings into geometric sculptures. Two big and two small horizontals cross two verticals, as simple and straightforward as our low country and the sea they depict. Hussem has also authored some austere poems.
- 07 **Gijs Bakker** can be considered as an experienced, highly versatile conceptual designer, jewellery artist and teacher. 'Designing always starts with the same questions: What does it add to the world of design?' states Bakker. 'Does it introduce something new – an idea or approach, a way of using or experiencing?' This amusing umbrella lamp, already designed in 1973, typifies Bakker's multi-style way of thinking and playing with existing shapes as its white (un) folding cap is similar to those used in photography.
- 08 **Guido Geelen** works in various applied arts: ceramics, textiles, bronze casting like this 'forever solidified' bouquet with pompom dahlias, an important Dutch export product. The object looks ambiguous. 'Flowers in a vase constantly are changing. In the beginning they look fresh and tempting, gradually they deteriorate and become a symbol of transience,' Geelen says. An interesting technical detail: the artist deliberately did not remove the construction, which was needed to keep the cast flower stems in their place. As a result the quasi-natural bouquet turns into an abstract table sculpture.
- 09 Artistically speaking, ceramist **Esther Stasse** feels related to the Calvinist, 'less is more' geometric art tradition of the Netherlands: 'I construct my vases from moulded parts; as an architect designing his buildings. My objects are autonomous as its function – placing flowers in them – is secondary,' she explains.
- 10 'I like to communicate through images as an independent film director would do,' states **Maarten Baas**. Autonomous designer Baas pokes fun with expectations of what functionality should look like. This working electric fan seems to be designed for a cartoon set in prehistoric times. Nevertheless Baas sculpted it by hand in synthetic clay around a traditional iron frame and mechanism. Here [at the embassy] it suggests how the heat in the UAE even starts to melt a fan.





Artists and designers

Artist **Maarten Baas**
 Gallery/Manufacturer **DHPH**
 Contact details www.dph.com
www.maartenbaas.com
 Title **Clay floor fan medium (white)**
 Technique **Synthetic clay to a metal skeleton, painted**
 Dimension **60 x 60 x 160 cm**
 Edition **Open edition**
 Year **2006**

Artist **Gijs Bakker**
 Gallery/Manufacturer **Artimeta Soest**
 Contact details www.gijsbakker.com
 Title **Umbrella Lamp**
 Technique **Chrome steel, viscose**
 Edition **Limited**
 Year **1973**

Artist **Noor Damen**
 Gallery/Manufacturer **Van Kranendonk gallery**
 Contact details www.vankranendonk.nl

Title **Agapantus '00**
 Technique **Photography**
 Dimension **150 x 120 cm**
 Edition **1/6**
 Year **2000**

Title **Nieuwe klompen '01**
 Technique **Photography**
 Dimension **150 x 120 cm**
 Edition **1/6**
 Year **2001**

Artist **Elsbeth Diederix**
 Gallery/Manufacturer **Galerie Stigter van Doesburg**
 Contact details www.elsbethdiederix.com

Title **Vanishing stillife '94**
 Technique **Photography**
 Dimension **85 x 60 cm**
 Edition **5 + 2 nr 3/5**
 Year **2004**

Artist **Uta Eisenreich**
 Gallery/Manufacturer **courtesy of Ellen de Bruijne Projects, Amsterdam**
 Contact details www.hier-eisenreich.org

Title **A (appel) '09**
 Technique **Photography**
 Dimension **38.3 x 25.5 cm**
 Edition **3**
 Year **2009**

Title **Spot the differences 1**
 Technique **Photography**
 Dimension **42 x 59.4 cm**
 Edition **3**
 Year **2009**

Title **Spot the differences 2**
 Technique **Photography**
 Dimension **42 x 59.4 cm**
 Edition **3**
 Year **2009**

Title **Cutting edge**
 Technique **Photography**
 Dimension **42 x 29.7 cm**
 Edition **3**
 Year **2010**

Artist **Guido Geelen**
 Gallery/Manufacturer **Galerie Ramakers Den Haag**
 Contact details www.guidogeelen.com
www.galerieramakers.nl
 Title **Untitled '06**
 Technique **Sculpture, cast aluminium**
 Year **2006**

Artist **Ingrid van der Hoeven**
 Gallery/Manufacturer **Galerie Maurits van de Laar**
 Contact details www.ingridvanderhoeven.nl
www.mauritsvandelaar.nl

Title **Venusheuvel**
 Technique **Softboard bonded & acrylic**
 Dimension **42 x 42 x 100 cm**
 Year **1998**

Title **Vrouwberg**
 Technique **MDF & softboard bonded**
 Dimension **42 x 42 x 90 cm**
 Year **1998**

Title **Wereldberg (3)**
 Technique **Softboard & roofmate bonded**
 Dimension **45 x 38 x 70 cm**
 Year **1997**

Artist **Willem Hussem**
 Gallery/Manufacturer **Galerie Nouvelles Images, Den Haag**
 Contact details www.nouvellesimages.nl/artists/show/18119
 Title **Untitled**
 Technique **Aluminium**
 Dimension **60**
 Year **± 1967**

Artist **Sjoerd Knibbeler**
 Gallery/Manufacturer **LhGWR**
 Contact details www.lhgwr.com
 Title **Surfacing Cloud I (Triptych) '14**
 Technique **Print on perspex (6 mm)**
 Dimension **75 x 60 cm**
 Edition **1/3**
 Year **2014**

Title **Surfacing Cloud II (Triptych) '14**
 Technique **Print on perspex (6 mm)**
 Dimension **75 x 60 cm**
 Edition **1/3**
 Year **2014**

Title **Surfacing Cloud III (Triptych) '14**
 Technique **Print on perspex (6 mm)**
 Dimension **75 x 60 cm**
 Edition **1/3**
 Year **2014**

Artist **Eva-Fiore Kovacovsky**
 Gallery/Manufacturer **Galerie STAMPA, Basel**
 Contact details www.kovacovsky.com

Title **Plate C**
 Technique **C-Print**
 Dimension **50 x 60 cm**
 Edition **1/3**
 Year **2009**

Artist **Krista van der Niet**
 Gallery/Manufacturer **LhGWR**
 Contact details www.kristavanderniet.nl

Title **Fruit '08**
 Technique **Ink jet printing on aluminium, laminated**
 Dimension **65 x 45 cm**
 Edition **4/6**
 Year **2008**

Title **Untitled '09**
 Technique **Ink jet printing on aluminium, laminated**
 Dimension **65 x 45 cm**
 Edition **3/6**
 Year **2009**

Artist **Erwin Olaf**
 Gallery/Manufacturer **Flatland Gallery, Amsterdam**
 Contact details flatlandgallery.com
erwinolaf.com

Title **Fall - Still Life 1'08**
 Technique **Photography**
 Dimension **141 x 106 cm**
 Edition **3/12**
 Year **2008**

Artist **Henk Ovink**
 Title **Pebbels**
 Technique **Aluminium**
 Dimension **30 x 50 cm**
 Year **1996**

Title **Paarten**
 Technique **Aluminium and synthetic material**
 Dimension **45 cm**
 Year **1995**

Artist **Jean-Marc Spaans**
 Gallery/Manufacturer **Galerie Nouvelles Images, Den Haag**
 Contact details www.nouvellesimages.nl
 Title **Untitled**
 Technique **Fujiflex ca on dibond/perspex**
 Dimension **125 x 175 cm**
 Edition **1/8**
 Year **2015**

Title **Untitled**
 Technique **Fujiflex ca on dibond/perspex**
 Dimension **100 x 320 cm**
 Edition **1/8**
 Year **2015**

Artist **A. Spronk**
 Title **Unknown**
 Technique **Ceramics with black glazing**
 Other details unknown

Artist **Esther Stasse**
 Contact details www.estherstasse.nl
 Title **Vaas-object**
 Technique **Casting technique**
 Materiaal **Ceramics**
 Dimension **56 x 37 cm**
 Edition **One off**
 Year **2014**

Artist **Warffemius**
 Gallery/Manufacturer **Galerie Ramakers**
 Contact details www.warffemius.info
 Title **Compact' 15**
 Technique **Corten steel**
 Dimension **74.5 x 47 x 13.5 cm**
 Edition **2/6**
 Year **2015**

Artist **Jólan van der Wiet**
 Contact details www.jolanvanderwiel.com
 Title **Gravity kandelaar**
 Technique **Made by magnetic forces**
 Dimension **34 x 34 x 25 cm**
 Year **2012**

Artist **Machining Emotion team: visual artist Ilona Lénárd, programmer-designers Ana Maria Anton and Serban Bodea, architect Kas Oosterhuis**
 Contact details www.machiningemotion.com
 Title **Machining Emotion # 04**
 Technique **Acrylic marker on canvas**
 Dimension **110 x 190 cm**
 Edition **4/12**
 Year **2015**

Artist **Machining Emotion team: visual artist Ilona Lénárd, programmer-designers Ana Maria Anton and Serban Bodea, architect Kas Oosterhuis**
 Contact details www.machiningemotion.com
 Title **Machining Emotion # 04**
 Technique **Acrylic marker on canvas**
 Dimension **110 x 190 cm**
 Edition **4/12**
 Year **2015**

Artist **Machining Emotion team: visual artist Ilona Lénárd, programmer-designers Ana Maria Anton and Serban Bodea, architect Kas Oosterhuis**
 Contact details www.machiningemotion.com
 Title **Machining Emotion # 04**
 Technique **Acrylic marker on canvas**
 Dimension **110 x 190 cm**
 Edition **4/12**
 Year **2015**

Companies

VAA.ONL by the innovation studio of VAA
 Master Planning, Architecture, Design, Programming
www.vaa.onl

BAM International Abu Dhabi LLC
 Construction
www.baminternational.com

Van Oord Gulf FZE
 Palm Jumeirah Island TBC Bluewater Island
www.vanoord.com

Mammoet FZE
 Lifting, transporting, installing and decommissioning large and heavy structures
www.mammoet.com

Fugro Survey Middle East Ltd.
 Geotechnical services
www.fugro-uae.com

Gielissen Interiors & Exhibitions
 Realizes Interiors & Exhibitions worldwide
www.gielissen.com

Hypsos Middle East LLC
 Design & build
www.hypsos.com

Kossmann.dejong
 Exhibition architects
www.kossmanndejong.nl

OPERA Amsterdam
 Exhibition architects
www.opera-amsterdam.nl

Royal Ahrend
 Office furniture
www.ahrend.com

ICE International
 Custom made area rugs and carpets
www.rugs.nl

Moooi - design Marcel Wanders
 Product design
www.marcelwanders.com
www.moooi.com
 Represented in the UAE by:
www.superstudio.me

Studio Kalff
 Product design
www.studiokalff.com

Studio Edward van Vliet
 Conceptual interior and product design for the corporate sector
www.edwardvanvliet.com

Layout and interior design Embassy: Ministry of Foreign Affairs of the Kingdom of the Netherlands in cooperation with local architect Mr. Bashar Chebabi from G.A.M.O.

Book credits

Book coordination **Embassy of the Kingdom of the Netherlands**
 Photography **Erik and Petra Hesmerg**
www.hesmerg.nl
 Text **Chris Reinewald**
www.chrisreinewald.nl
 Design, typesetting and production

Beukers Scholma
www.beukers-scholma.nl
 Arabic Translation **Embassy of the Kingdom of the Netherlands**
 Print **Zwaan Printmedia**
www.zwaan.nl

